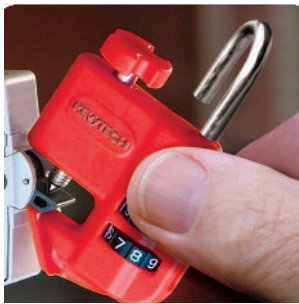


Make **testing easier** and **faster** with
Kewtech's great kit **KEWTK1**

Included in the kit...



Lightmates For easy $R_1 + R_2$ and loop testing at lighting points.



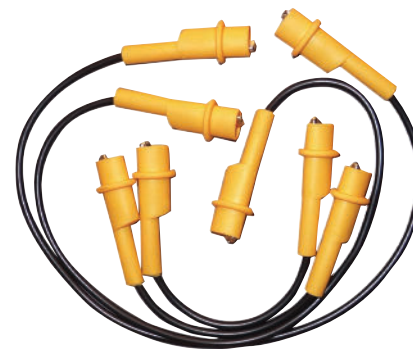
Kewlok One lockout for most MCBs and toggle main switches (Saves on large kits!)



KewcheckR2 For fast and easy connection at socket outlets. No need to remove sockets.



Kewstick UNO Your handy non-contact voltage detector.



JUMPLD1 Jump leads for insulation and $R_1 + R_2$ testing at distribution boards.



Pat Adapter Makes a PAT tester out of your MFT or Insulation Continuity tester.

