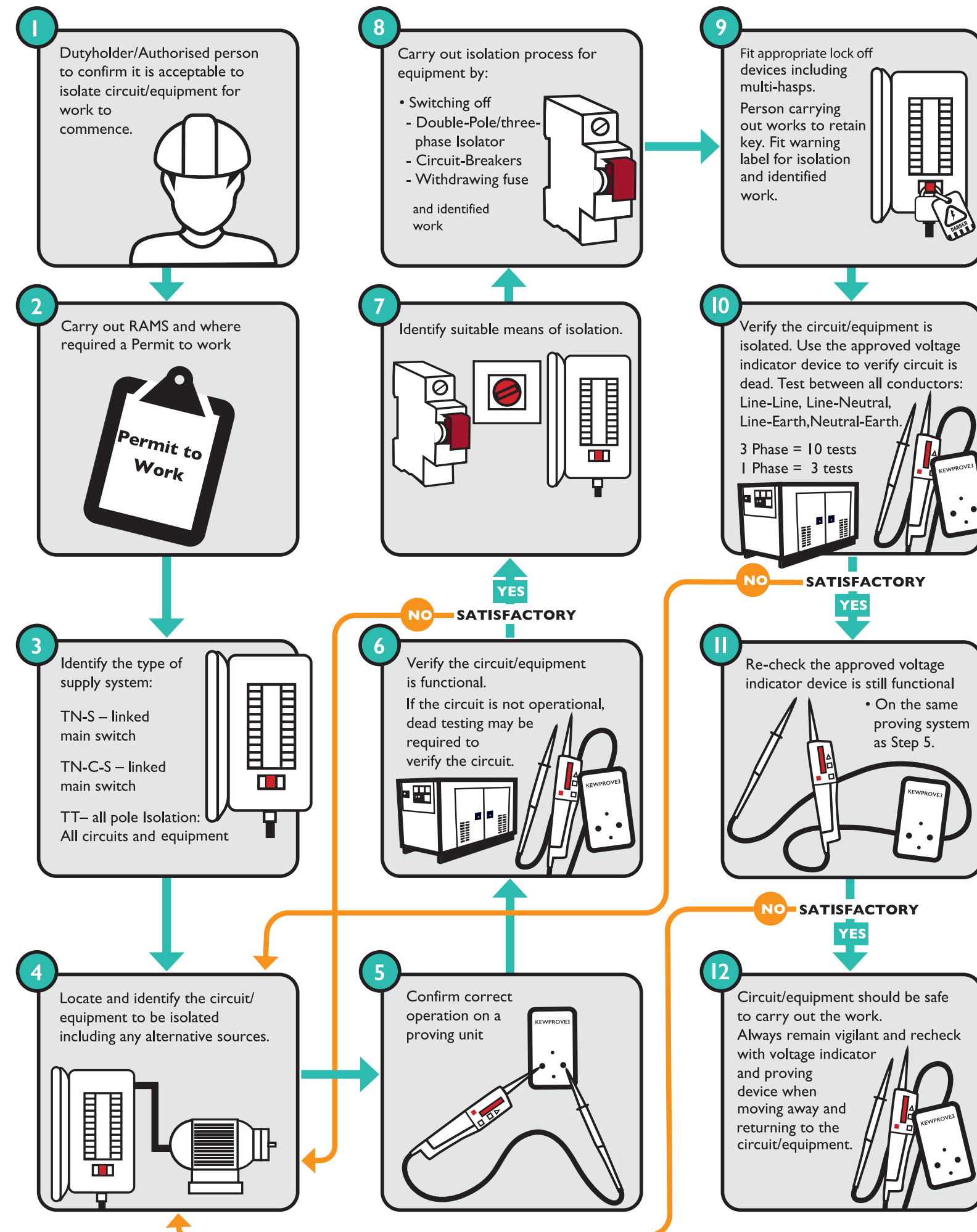


12 EASY STEPS TO SAFE ISOLATION



Process for re-energising the circuit/system

- Step 1:** After completing the work inspect and test in accordance with Part 6BS7671 (dead tests).
Step 2: Cancel permits (if issued), remove locking off devices, locks and labels and restore electrical supply.
Step 3: Complete testing (live tests). Commission circuit equipment.
Step 4: Complete and issue appropriate test certificates / reports.

Kewtech 'Clear Thinking' diagrams are schematics to aid the understanding of electrical testing. Ensure proper safety procedures are taken before testing.

KEWIS01 KIT KT1710

- 12 to 690V AC/DC voltage detection
- Continuity
- LED indication - even without batteries
- BSEN 61243-3, Cat III 600V



KEWIS02 KIT KT1780

- 12 to 690V AC/DC voltage detection
- Continuity
- Phase rotation
- Bright white torch
- Back lit LEDs - even without batteries
- BSEN 61243-3, Cat IV 600V



KEWIS03 KIT KT1795

- 6 to 1000V AC, 6 to 1500V DC
- Switchable load to overcome any ghost voltages
- Continuity & phase rotation
- LCD - voltage & resistance
- BSEN 61243-3, Cat IV 600V



KEWIS04 KIT KT1720DL

- Dedicated voltage indicator
- 12-400V AC/DC voltage detection
- No batteries required
- Permanent GS 38 compliance with retractable probe tips



KEWIS05 KIT KT5

- Non contact voltage tester functionality
- Single pole voltage detection (both probes)
- 1 to 1000V AC TRMS & 1500V DC
- Greater than 50V buzzer & vibration indication
- LCD Voltage display
- Open jaw current detection – detects open PEN
- Continuity & phase rotation BSEN 61243-3, Cat IV 600V
- Cat III 1000V



KIT BAG 3

KEWPROVE 3

- 50-690V proving unit with just two terminals to test AC and DC voltage detectors
- Fast response and works with low impedance voltage testers
- Ramps down through voltage levels
- LED indication of functioning unit



KEWLOK

- Universal lock off device fits all toggle switch mcbs / main switches RCBOs
- Adjustable combination lock - no keys to lose



Domestic Lock Off Kit
LK10



Industrial Lock Off Kit
LK20



Advanced Lock Off Kit
LK30

Johnny Ace says:

Remember to check with a duty holder/authorised person before isolating and locking off the circuit

